

# EVO800/1200/1200R



## OILBATH GEARMOTORS FOR SLIDING GATES



Electromechanical gearmotor in oilbath for industrial sliding gates up to 800/1200 Kg. Complete with encoder, magnetic limits and built built-in control unit.  
**Safe and Precise** thanks to the encoder and the slowing down in opening and closing.  
**Practical** thanks to the control unit with plug-in receiver and self-learning function.  
**Versatile** versatile, with sturdy alluminium base corrosion-resistant and all moving parts are in oilbath.  
**Constant performance** over time and in any condition thanks to reduced wear&tear and the possibility to maintain the oil at the ideal temperature using HOT (optional). Manual release with coded lock.

### EVO 800

230 V electromechnical gearmotor in oil bath with electronic limit switch, encoder and built in control unit. **For gates up to 800 kg.**

### EVO 1200

230 V electromechnical gearmotor in oil bath with electronic limit switch, encoder and built in control unit. **For gates up to 1200 kg.**

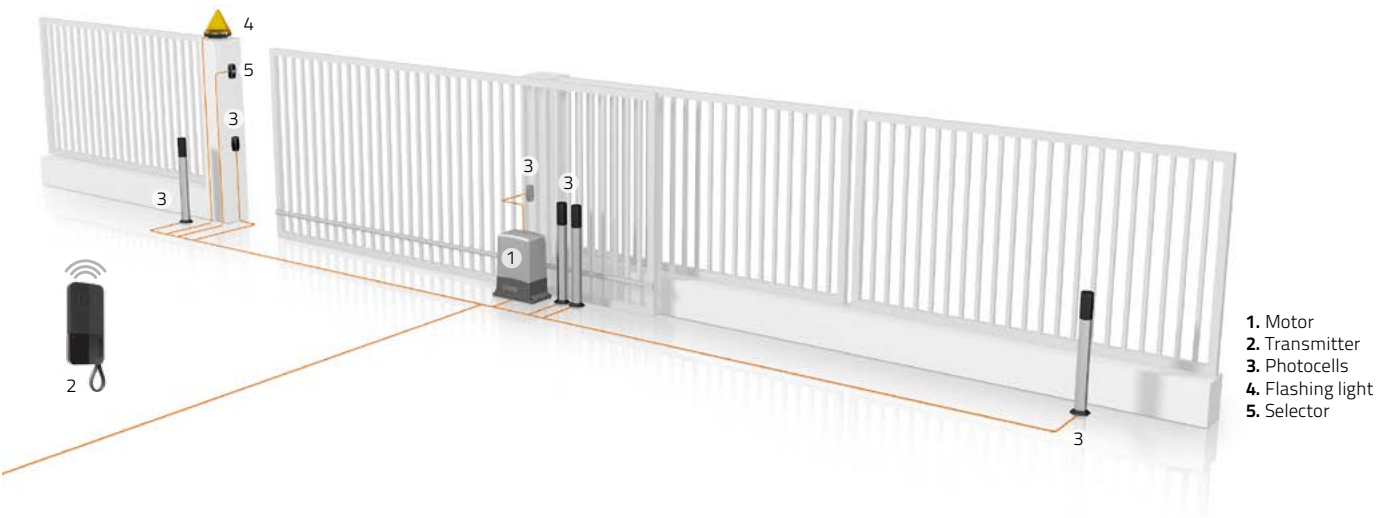
### EVO 1200R

Eltromechanical 230V gearmotor in oilbath with integrated heating system, thermostat for low temperature fonctionning, with magnetic limit switch encoder and built in central unit.  
**For gates up to 1200 kg.**

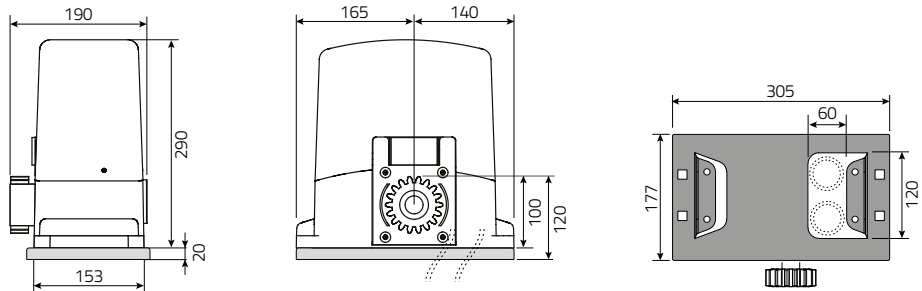


## EVO800/1200/1200R

### INSTALLATION DIAGRAM



### DIMENSIONS



Dimensions in mm

### ACCESSORIES

#### CREM P

Plastic rack with steel core. M4 28x22 mm, complete with washers and self boring screws 6,3x25. Pack of 10 pcs 1 m each.



#### CREM12

Metal rack. M4 30x12 mm, complete with weldable spacers DSC, screws M8x25 TE and washers Ø 8. Pack of 4 pcs 1 m each.



#### DSC

Weldable spacers for CREM12 and CREM8. Pack of 30 pcs.



#### DAC

Screwable spacers for CREM12 and CREM8. Pack of 30 pcs.



#### DAP

Screwable and adjustable spacers for CREM12 and CREM8. Pack of 3 pcs.



#### KIT SBLESTEVO

External unlocking kit.



#### HOT

Electronic heating system with temperature sensor, for 230V motors..



#### TS20

Oil for EVO800. 5 liters.

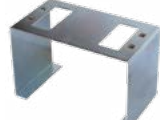
#### TS40

Oil for EVO1200. 5 liters.



#### CPEVO

Base plate.



#### RVS

Mechanical brake for gates on sloping ground.



#### ADFCSM

Magnetic limit switch adapter, from open collector to NC.

